

\*\*\*\*\*  
**White bait Connection Programme**  
**Awa Health Assessment**

Year 7-9 Feedback Feb 26<sup>th</sup>

Yesterday morning we went to assess the health of Whakarapa awa. The Whitebait connection lady set some traps over night. We walked down and checked the traps and the clearness of the water.

The way we checked the clearness of the river was we collected some of the water and stored it inside a plastic tube and it has to be in a tube with a black disc in it. Then you have to move the black disc back until it gets blurry then you have to stop and record the number, the longer it gets the cleaner it is. Nigel caught an eel. We tested the temperature and it was 14.5 and the flow of the water was 0.62.

There are Red Fin Bully fish, eels and whitebait in our awa. So the signs say we have a clean creek with little fishies in it.

Maui Pomare

Yesterday we went to Whakarapa Awa. We tested the clarity of the water by using a water clarity tube. We filled the tube and put our eye at one end then moved a disc until it went blurry then stopped and lined it up with the number on the tube. Good clear water is between 60 and 80, and our tests showed our water is 72% clear.

After we tested the clarity of the water we tested the water temperature with a thermometer. The temperature was 14.5 which is a really good temperature because its cool enough so little fish and eels can live in this environment. We did one more test and that was the flow of the water.

We used something that will float then found a 10 metre straight of water then let the leaf go down and counted how long it takes and my leaf took 35 seconds.

Cont'd next column

\*\*\*\*\*  
 We found different species of fish. We found an eel. We also found Red Fin Cockabully and Common Cockabully and Whitebait so this means our awa is healthy and clean.

Ben McLean

On Tuesday 19<sup>th</sup> February the whole school walked up Whakarapa river with Whaea Soozee. We got to the river and Nigel and I caught the first fish. We walked up further and Nigel caught an eel, he just lifted up a rock and he jammed his net and caught it. We checked the trap and we caught some Inanga. The clarity of the water is good for Inanga, koaro the Common Bully, Eels and a Red Fin Bully. The temperature of the water was 14.5 which is a healthy sign because fish like to live in cool fresh water. We walked all the way there and had some fun and we walked all the way back.

Mitikakau Morunga



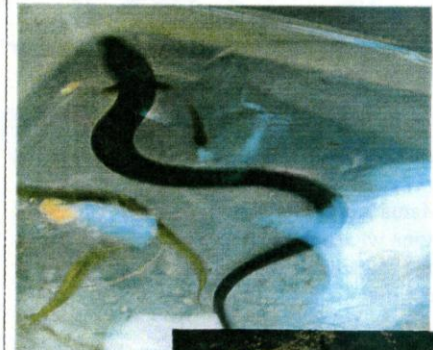
Cont'd next column

\*\*\*\*\*  
 On the 19<sup>th</sup> of Feb was the day that we went to the Whakarapa awa. The Whitebait Connection helped us check the clarity of the water and the water was the cleanest water the lady has ever seen in the Hokianga.

Whaea Soozee set traps the night before the day happened. When we got there Nigel caught the first whitebait. The temperature of the water was quiet cold and it was good for whitebait, tuna, Red Fin Bully and the Blue Gilled Bully. I saw the Common bully and Red fin bully and the Blue gilled bully and whitebait.

The day was quite cool because I learned how to catch whitebait and we got to use some of the equipment to catch fish and stuff.

Maui Ngaropo



Cont'd over page

\*\*\*\*\*  
Yesterday the lady that works for the Whitebait connection program took the whole school down to the Whakarapa creek.

We all were in groups - there were 5 groups. We caught some fish and one eel. The eel was 20 centimetres long and all the fish were about five to ten centimetres. Whaea gave us one net for each group and she told us to scoop the net into the creek so that we can catch the fish.

When we got there we had to go and get the traps that Whaea Soozee set the night before. We had to go check them. Luckily I brought some spare clothes because I fell in and I was getting cold.

There were fish in all of the traps and that means that the awa is alive. Fish only like cold water that's why there is so much life there.

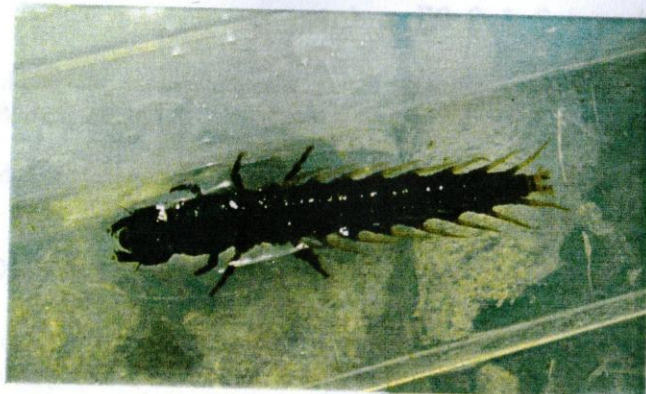
Amaru Tipene  
Starr Tipene  
Allen Karena  
Taisha Paparao

On Tuesday the 19<sup>th</sup> Feb we went to the Whakarapa awa with the people from White Bait Connection programme. We walked down the creek and Nigel caught the first white bait and the white bait connection helped us too.

The first trap we caught seven white bait. In the second trap we caught a Red Fin Bully.

We walked up further and then Nigel caught an eel. The temperature of the water was 14.5 which is good for eels and whitebait. It was a cool trip.

Patrick



Whaea Shirley

\*\*\*\*\*