

# WHITEBAIT CONNECTION **NATIONAL** **IMPACT REPORT**

**2022 - 2023**

# Whitebait Connection

## 2022/23 National Impact Report

<b>Overview</b>	<b>3</b>
<b>What is WBC?</b>	<b>3</b>
<b>National Statistics</b>	<b>5</b>
<b>Wai Connection</b>	<b>6</b>
<b>Highlights</b>	<b>7</b>
Northland (Te Tai Tokerau)	7
Auckland (Tamaki Makarau)	9
Gisborne (Te Tai Rāwhiti)	10
Hawkes Bay	12
Taranaki	12
Wellington	13
Nelson/Tasman	14
Canterbury	15
<b>Health and Safety</b>	<b>21</b>
<b>Mountains To Sea Conservation Trust Wānanga 2022</b>	<b>22</b>
<b>WBC in the Media Around the Country</b>	<b>23</b>
<b>National Funders and supporters</b>	<b>24</b>
<b>Regional funders and Supporters</b>	<b>24</b>
<b>Partners and Collaborators</b>	<b>25</b>
<b>Keep up to Date with our Mahi</b>	<b>26</b>

## Overview

Mountains To Sea Conservation Trust (MTSCT) was established in 2002 - CC #23406 and is the national body for the Whitebait Connection (WBC) programme. WBC has expanded to deliver in ten regions of New Zealand.

The WBC brand has an active focus on community engagement and freshwater conservation. The national expansion of WBC is based on a non-profit franchise concept. Our WBC endorsed providers are organisations throughout the regions that have been given permission to use our brand. All WBC Programme Coordinators are fully trained by MTSCT and meet our endorsement criteria.

## What is WBC?

WBC empowers schools and communities by providing hands-on experiences in their local freshwater environments. Our goal is to raise awareness, understanding and support for freshwater conservation throughout Aotearoa (New Zealand) through the provision of dynamic experiential freshwater education opportunities.

The full WBC school programme concept:

- Introduction to freshwater biodiversity
- Investigation of local freshwater environment/s
- 1:4 adult/student ratio aim = many whānau share the experience
- Look and learn – no hurting tangaroa's children (freshwater creatures)
- Be engaged and inspired
- Make comparisons
- Take ACTION for freshwater conservation through an action project



WBC has a team of 60+ coordinators based in ten regions with our regional provider organisations.



#### Auckland/Northland



#### Coromandel/Hauraki

*The Friends of Te Whanganui-A-Hei Marine Reserve Trust*



#### Tairāwhiti Gisborne

#### Hawkes Bay



#### Taranaki



#### Wellington



#### Nelson/Tasman



#### Canterbury

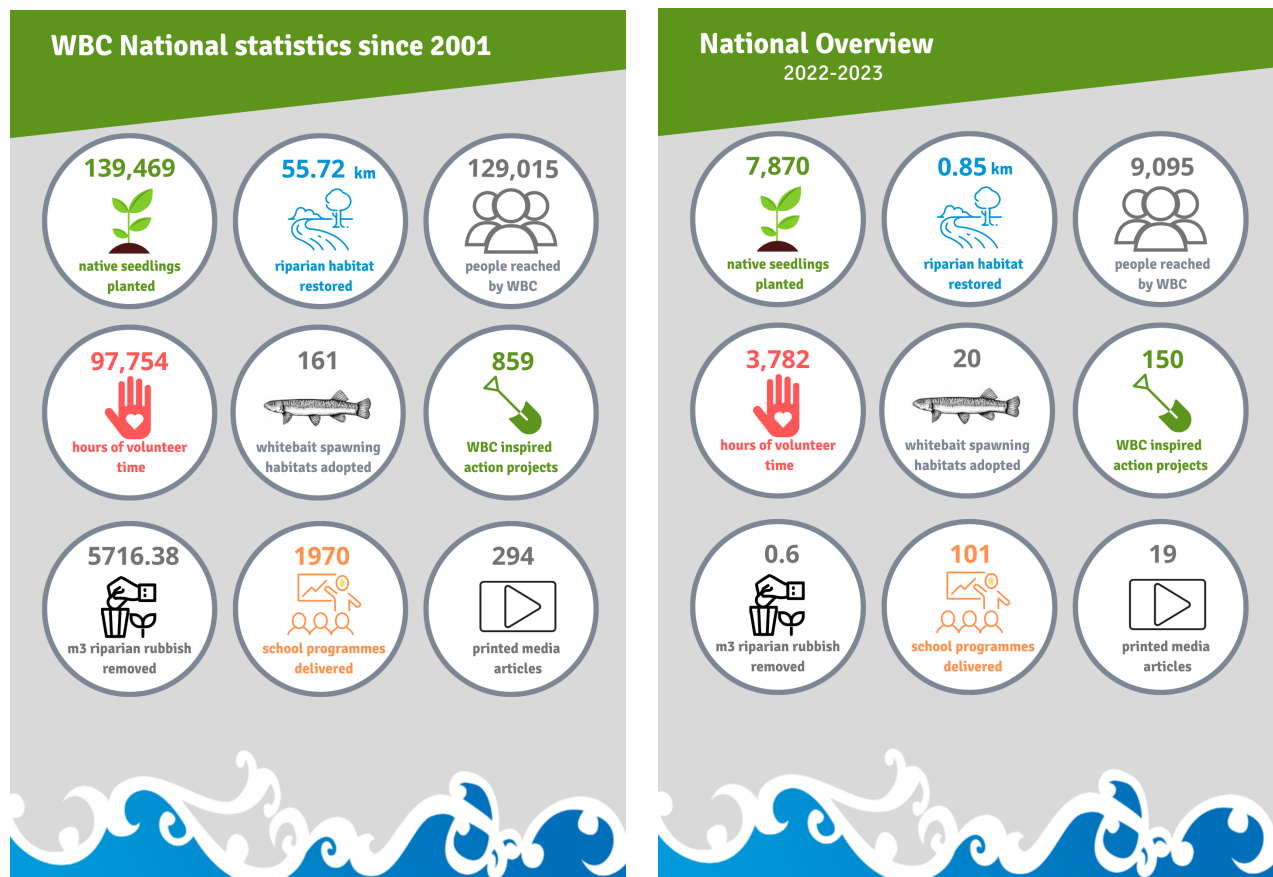




## National Statistics

Since 2001 WBC has reached **129,015** people and delivered **1970** school programmes. Through the programme **139,469** native seedlings have been planted, **161** Īnanga spawning habitats have been adopted and **859** WBC inspired action projects have been achieved.

In the 2022-23 reporting period **9,095** people were reached by WBC and **101** school programmes were delivered. There were **150** WBC inspired action projects, **7,870** native seedlings were planted and **20** Īnanga spawning habitats were adopted. A summary of some of the key statistics for the programme since 2001 and for the 2022-23 reporting period can be found below.



## Wai Connection



In early 2023 we announced the roll out of our nationwide Wai Connection – ‘Tatai Ki Te Wai’ project. This Mountains to Sea Conservation Trust (MTSCT) led project will support community catchment group engagement and has been funded through the Ministry for the Environment’s (MFE) Essential Freshwater Fund (EFF). The project falls into the ‘catchment groups’ component of the six EFF packages. The Government’s Essential Freshwater (EF) package exists to build capability and capacity in New Zealand’s freshwater management by empowering better equipped and knowledgeable community catchment groups.

Wai Connection offers on-the-ground support to assist with catchment issues through tailored, catchment-specific change. Community catchment groups will be empowered through Wai Connection with the provision of knowledge, tools and expert support to help identify issues in their local catchment. Wai Connection will connect people with their waterway, and promote collaboration between local catchment groups, NGO’s, hapū/iwi, Regional Council, Central Government, and primary industry working within the catchment – helping deliver on the aims of the EF package.

Wai Connection will increase our coordination support for catchment groups and communities and scale up the suite of programmes and projects that we already offer under Mountains to Sea Conservation Trust including Whitebait Connection, Experiencing Marine Reserves - EMR estuary engagement programmes, our national Īnanga spawning programme and community-based freshwater monitoring programme throughout Aotearoa NZ through our network of Mountains to Sea Provider Organisations.

Wai Connection is funded until the end of June 2025 and will enable support to up to 100 catchment



groups across the country. The project has seen WBC programme delivery scale up to now include the Hawkes Bay & Taranaki regions in 2023 and will support expansion to other regions including Otago, Marlborough, the West Coast and Waikato (outside of Coromandel) in the near future.



*Community Based Freshwater Monitoring (CBFM) training in Waimamaku (Northland)*

## Highlights

The following section provides a summary of the highlights from the regions from the 2022-23 reporting period (beginning of term 3 2022 to the end of term 2 2023).

### Northland (Te Tai Tokerau)

In the Te Tai Tokerau region 25 WBC school programmes were delivered during the 2022-23 reporting period engaging 953 students and 298 supporting adults. Some of these schools have participated in the programme in the past, providing reassurance that the programme is well received in the region.





During the 2022-23 reporting period the WBC Northland team also delivered 14 Community Based Freshwater Monitoring (CBFM) training events to a variety of groups in the Te Tai Tokerau region including community catchment groups, hapū and marae. We were happy to train 93 participants who were empowered to apply the skills learnt to monitor their local awa. The feedback from participants suggests these events were a success.



*Hikurangi School students watching a longfin tuna return back to the awa*

In June 2023 we celebrated the completion of year one of the three year MFE funded Northland Īnanga & Spawning Habitat Restoration Project (NISHRP). This project focuses on the Doubtless Bay, Hokianga, Bream Bay, Kawakawa and Whangaroa catchments and supports the identification, protection and restoration of Īnanga spawning habitats in these catchments in collaboration with mana whenua, agencies and community. Through the project to date 16 new Īnanga spawning sites have been identified and adopted, 5200 riparian plants have been put in the ground with 550 metres of riparian margins restored. One of the main highlights is the partnerships this project has established or strengthened including with Northland Regional Council, DOC, Patu Harakeke, Ngāti Manu, Whirinaki Trust, Ngāti Kahu,



Kaitiaki Whangaroa, Waipu Waters, Waipu Community Nursery, NZ Landcare Trust, Tiaki Nga Wai O Hokianga amongst others.

The delivery in the region has not come without challenges this year with frequent flooding and rain events impacting school delivery, Tnanga spawning and community engagements.



*Some of the Northland team with Richie McCaw & the Patu Harakeke taiao team at a NISHRP planting day*

### Auckland (Tamaki Makarau)

Despite COVID 19 issues and some bad flooding in the region the Auckland team were happy to deliver to more schools during the 2022-23 reporting period and to get back to a normal routine of school delivery. During this time the team delivered 47 school programmes engaging 3190 students and 560 supporting adults! Across these programmes there were 49 student action projects achieved.





Another highlight from the region included the adoption of four new Inanga spawning sites as part of the Whitebait Habitat Restoration Project (WHRP). The introduction of team professional development days has also been a highlight creating an opportunity for upskilling and team bonding. Some examples of professional development the team has engaged in has included macroinvertebrate identification and fish trapping workshops.



*Oteha Valley School students searching for macroinvertebrates during a stream investigation*

### **Gisborne (Te Tai Rāwhiti)**

Within the Te Tai Rāwhiti region our regional provider organisation He Awa Ora, He Tai Ora, Healthy Rivers, Living Sea delivered 7 Whitebait Connection school programmes during the 2022-23 reporting period. These programmes engaged 318 students and 34 supporting adults.





*Programme Coordinator Hana Hardy setting up some invertebrate and fish identification for Awapuni School*

One group of students engaged in the programme was Gisborne Boys High School's Year 13 Biology Class. The Regional Coordinator for the region Amy Hardy worked with this group to coincide with their NCEA Biology level 3 achievement standard where they compared water quality assessments at two different streams. They completed habitat assessments, chemistry tests, and a robust identification of invertebrates following NIWA's SHMAK (Stream Health Monitoring Assessment Kit) protocols.





*Gisborne Boys High School Year 13 Biology class on a field trip*

In 2023 Tairāwhiti Environment Centre came onboard as a new regional provider organisation for the delivery of Wai Connection. They will be partnering with He Awa Ora, He Tai Ora, Healthy Rivers, Living Sea for the delivery of the project in the Te Tai Rāwhiti region.

### Hawkes Bay

In 2023 Sustainable Hawkes Bay - Centre for Climate and Resilience under the Sustaining Hawkes Bay Trust came on board as a new provider organisation for WBC. The trust will be delivering Wai Connection in the Hawkes Bay region. The new Regional Coordinator for Wai Connection in the region is Stephanie Fowlie and there will be new team members joining her team in the near future to support the delivery of the project.

### Taranaki

In 2023 Wild for Taranaki also came on board as a new provider organisation for Wai Connection. Te Kaahui O Rauru & Nga Motu Marine Reserve Society will be partnering with Wild for Taranaki for the delivery of the project in the region. Nga Motu Marine Reserve Society has already been delivering the MTSCT Experiencing Marine Reserves (EMR) programme in the region.





## Wellington

During the 2022-23 reporting period Mountains to Sea Wellington (MTSW) delivered 15 school programmes to 420 students whilst also engaging 165 supporting adults. Mountains to Sea Wellington's Whitebait Connection programmes continue to be more focussed on connecting students with wider catchment restoration initiatives across the region, allowing students to have more meaningful input into management of their local waterways. It also supports succession for community groups and builds connection across the community. The continuation of ELC funding in the region has allowed MTSW to provide to more schools and students across the region with fun and diverse programs like the noho taiao with Taita College te reo Māori class, looking at biodiversity monitoring in their wetland and the bush block surrounding.



*A Lake View School student during a stream investigation*

In 2023 Mountains to Sea Wellington partnered with Ahurea Taiao, the Ngāti Toa Rangatira taiao team, to co-host their third ever freshwater hui. This was renamed the wānanga waimāori to better reflect the focus of learning and collaboration. Hosted at Takapūwahia marae and at field sites around Porirua, this



event brought together a wide audience of freshwater community members who got to connect with one another and hear about a range of projects focused on community driven solutions for freshwater restoration.

The MTSW Wellington has grown over the past year with new team members coming onboard for the delivery of the Wai Connection project alongside new admin and finance, comms and event management team members.



*Pinehaven School students during a stream investigation*

## Nelson/Tasman

Tasman Bay Guardians (TBG) have had a successful year of Whitebait Connection delivery in the Nelson and Tasman regions. During this period they delivered 7 school programmes engaging 310 students. The TBG team has grown significantly this year with 9 new team members coming onboard in 2023 to support the expansion of delivery associated with Wai Connection. TBG will be expanding their delivery in the near future through Wai Connection to also include the Marlborough and northern West Coast regions. Highlights for the 2022-23 reporting period include deliveries by new staff to 5 schools and TBG is excited to have funding and capacity to offer continued support with schools action projects. St. Peter Chanel has adapted an Īnanga spawning site near the school and is taking the kaitiaki role seriously as





they are planning to monitor and possibly restore the habitat. This project is really showcasing the potential of the Wai connection project to make actions sustainable and enduring. This funding is also making deliveries possible further afield and in more regions. In Marlborough TBG are currently planning deliveries with enthusiastic teachers for term 4 and term 1 next year.



*Hope School students observing a catchment model with Programme Coordinator Rosalie Bennett*

## Canterbury

Although the EOS Ecology team in Canterbury did not deliver any Whitebait Connection programmes this year this time was spent delivering their Ministry of Education funded Nature Agents programme and also preparing for upcoming delivery and expansion with the Wai Connection project. Part of EOS Ecology's role within Wai Connection is to provide technical GIS, science support, and resource development for the project at a national level whilst also delivering the project at a regional scale in Canterbury. EOS Ecology had 5 team members attend our national wānanga in 2022 who received training for delivery of Whitebait Connection school programmes and Community Based Freshwater Monitoring (CBFM).





*The EOS Ecology team during a recent team training session*

---

### *Participant Feedback*

---

*"You have done a great job teaching us kids about the water, my friends and I have been taking much more action to clean up our environment!" - Jessica, One Tree Point Primary School (Northland)*

*"We loved the whole programme and are very thankful for being able to take part and we are proud of ourselves for fundraising for our littatrap" - Jackie, Greenhithe School (Auckland)*

*"I really loved being a part of the Whitebait Connection even if it was just for a day. I would love to do it again someday!" - Aaron, Russell School (Northland)*

*"Other schools should take part in the WBC programme because it is very good for us to know about this stuff for the future and to help our environment" - Pinehaven School student (Wellington)*

*"[Kim] I'd like to thank you and Pat for sharing your knowledge and skills with our community. It meant a lot to us to know our bathing awa is in good health, and has enabled us to check stream health ourselves, Also giving us a benchmark to get our other's back to" -WBC Northland led SHMAK training participant*





## Inspiring Action

WBC school programmes empower students to take action for their local freshwater environments through facilitation of student led action projects. Some schools go above and beyond with their action projects and creativity to help look after their local freshwater environments.

Following their Whitebait Connection programme which included a trip to the Īnanga spawning site at Paparoa Creek the students of Paparoa School (Northland) were empowered to adopt their local Īnanga spawning site. We are impressed by all the mahi the students have done to date to protect this spawning habitat! Actions they have undertaken have included writing letters to their local councillor, writing articles about the Īnanga spawning site in the local Paparoa Press and undertaking pest trapping by Paparoa Creek with Shaun Holland from Pest Free Kaipara Harbour (run by Te Uri O Hau Environs). The students have also been involved in a planting project run in collaboration with other local schools, the Kaipara Moana Remediation, Te Uri O Hau and EnviroSchools which has resulted in 900 native plants being planted near the Īnanga spawning site. The students hope to fence off the Īnanga spawning site and put up signage informing the public about it in the near future.



In Auckland there were many students that completed individual as well as group actions to help enhance, protect and restore their local freshwater environments. Many schools created posters or undertook art projects addressing freshwater related issues that were shared with the community (Elm Park, Papakura Normal, Albany Primary, Oteha Valley, Westlake Girls, Nukumea Primary, Snells Beach Primary, Warkworth Primary, Ahuroa School and others). Some schools engaged in riparian planting for their action activity including Opaheke School, Silverdale Primary School and Mauku School. Drury Primary School and Wenderholm Nature Kindy Play and Learn were empowered to take action by undertaking a rubbish clean up whilst Whenuapai Primary School students developed products for a



sustainability market and upcycled clothing for trash to fashion. Many of the schools and early childhood education groups engaged in the Ko Te Wai programme installed rain barrels (Orewa Primary, Rangitoto Kindergarten & Sherwood Primary School) whilst others committed to regular water quality monitoring of local awa. Greenhithe School's students fundraised for their own Littatrap and then installed it in their school stormwater drain to prevent rubbish entering the stream via the stormwater system.



*Greenhithe School students (Auckland) with the littatrap they purchased through fundraising.*

Mercury Bay Area School in Whitianga has a long-term project with trap lines at the Whitianga Bike Park. They are also helping with the planting and restoration of the streams that flow through the Bike Park. The school continues to undertake water quality testing and look at fish passage and Īnanga spawning sites, making this a project for the whole school over many many years to come.

In the Wellington region there was a mix of action projects undertaken from both schools and catchment groups that have contributed to wider catchment initiatives. One example is the Takapu Valley Restoration project. This project is supported by Mountains to Sea Wellington (MTSW), Porirua City Council, Wellington City Council, Kids Enhancing Tawa Ecosystems (KETE), Ngāti Toa Rangatira, Friends of Tawa Bush, and Forest and Bird. Many students have contributed to this restoration project this year following their involvement in education programs with Mountains to Sea Wellington including Redwood School and Tawa School. Another example is the restoration that has occurred at Māwai Hakona. In partnership with Enviroschools and the Friends of Māwai Hakona, MTSW worked with 3 schools -



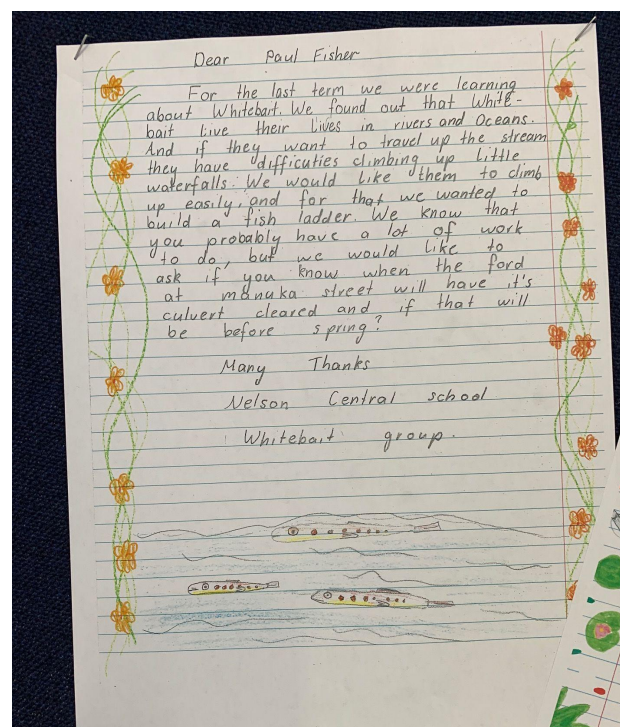


Pinehaven School, Fergusson Intermediate, and Trentham School, to learn about the Māwai Hakona and surrounding wetlands, the history of the area, and the local community effort. The students then adopted a section of the stream where they planted trees and continue to care for the planting area throughout the seasons. They are planning further planting this winter.



*Māwai Hakona planting action (Wellington)*

Nelson Central school has several ongoing action projects that are restoring their local freshwater environments. They are currently in the process of replacing a fish ladder near their school that got removed in a recent flood event (May 2023) and have been investigating different types of ladders and have had a go at designing their own. They have also formed a whitebait group, some of whom wrote to Nelson city council requesting that the culvert near their school be cleaned out and enquired about the culvert and how fish passage could be improved. The council replied thoroughly to enquiries and confirmed that the Manuka street culvert has been identified as a priority site for improvements. The school is booked in for some riparian planting in the first week of term 3. They showcased at a parent night and





again at their lightshow celebration that coincided with the Te Ramaroa festival in Whakatu. They are keen on undertaking continual monitoring of the Brook.

---

*Teacher's feedback*

---

*"The programme was very well supported with resources and was flexible enough for me to adapt to the needs of the children. It was an enjoyable unit to teach. Many thanks for the support" - Tom, Nelson Central School*

*"The programme was excellent, we appreciated the information and hands on experience it provided for our tamariki. It was delivered in an appropriate way that was enjoyed by our tamariki and our kaiako" - Lynette, Torbay Kindergarten (Auckland)*

*"We loved our learning with Briar. The creek visit where we tested water and discovered aquatic life was brilliant. The students have since visited the creek regularly. She was always organised and on time. We loved her knowledge, enthusiasm and passion for the outdoor environment and helping us be better at looking after NZ's waterways" - Karen, Puawai Montessori (Auckland)*

*"Our Whitebait Connection experience was fantastic!! Patricia was amazing!! Kids learnt lots, and had fun whilst doing it. Thank you so much!" - Tineke, Whangārei Heads School (Northland)*

*"What a great opportunity for the students to actually get practically involved and look at the health of a couple of rivers and compare them. It fits in perfectly with our tree growing that we have been undertaking for the last few years at school, so that we can find a river that we can plant up and over a long period of time record how the river improves with the planting, including the critters found in the river" - Grant, Principal - Upper Moutere School (Tasman)*





*A prize winner at the Parihaka Bioblitz/World fish migration day event (Northland) with the friendly WBC Giant Kōkōpu*

## Health and Safety

As the national umbrella organisation for all other regions, the trust's Health and Safety management for the team, volunteers, participants and everyone we associate with is our number one priority. The trust is accredited Adventure Activity provider (AAO 534) with Outdoors Mark and audited on a regular basis. New coordinators always receive full training prior to the start of the programmes and are provided hands-on support with their initial delivery to ensure all H&S procedures are understood and followed at all times.



## Mountains To Sea Conservation Trust Wānanga 2022

The annual Mountains to Sea Conservation Trust wānanga was hosted in October 2022 and involved 79 participants. The event was hosted at Rangiora Marae, Takahiwai in collaboration with Patu Harakeke.

The theme for the 2022 wānanga was 'kotahitanga'. This theme resonated strongly with the mahi we do collectively and allowed us to discuss the bringing together of diverse worldview, beliefs, values, and strengths to empower action for nature.

Highlights from the wānanga included hau kāinga presentations and field trips led by Patu Harakeke, networking, show and tell presentations from wānanga participants, local marine and freshwater field trips and a social evening at the Porthouse Bar & Eatery.



On the final day of the wānanga the participants engaged in a workshop where we explored the theme of kotahitanga. The theme was explored by each wānanga participant through the creation of an uku tangi under the guidance of our talented kaiako Davina Duke and Hera Johns.

Our workshop ended by compiling the following whakataukī:

*Mā te ta me te hi  
kia mauri tū, kia mauri rere,  
ki ngā ao e rua,  
hei whakakotahi ai i a tātou*

---

*From the blend of this and that  
comes,  
be mauri still, be mauri flowing,  
two worlds, two contexts, two  
perspectives,  
to unite us.*

The Youtube video from the wānanga can be found [here](#).



## WBC in the Media Around the Country

### National

- [Wai Connection project announcement](#)
- [Making community based freshwater monitoring data count](#)

### Northland

- [Waipu Waters & WBC planting day with Richie McCaw](#)
- [Waipu Waters SHMAK training event](#)
- [Ruakākā River planting](#)
- [Maungaturoto Primary School programme](#)
- [One Tree Point School programme](#)
- [Paparoa School programme](#)
- [Te Karere news clip from a WBC/DOC led SHMAK Training workshop in Peria, Northland](#)

### Auckland

- [Warkworth School programme](#)
- [Ahuroa School programme](#)
- [Te Hōnonga a Iwi Restoring Rosedale Park project](#)

### Waikato/Coromandel

- [Educating our children on the importance of healthy water](#)
- [Protect what we have](#)

### Wellington

- [Sharing a Waiti story](#)
- [Papawai stream walk](#)
- [Martinborough Kindergarten Wairarapa Moana education program](#)
- [Mangapōuri Stream clean-up](#)

Bream Bay News Page 10

4 May 2023

### Learning how to test the health of our local streams and rivers

By Melinda Butt

On 24 and 25 April the Whitebait Connection held a water quality assessment course at Langs Beach and Waipu providing information on how to test the health of streams, rivers, lakes, and wetlands.

Using one of the SHMAK (Stream Health Monitoring Assessment Kits) one can establish basic water quality parameters like water clarity, temperature, and conductivity as well as biological indicators like macro invertebrates. More comprehensive kits also include tools for measuring nitrates, phosphates and E. Coli. Over the course of the two days a group of interested local people learnt how to monitor and restore local waterways.

Patricia Clark, who ran the course said, "It's important for communities to be empowered to monitor their own local waterways and to be aware of the overall health of the water."

Graham Mathews, the local Bream Bay River catchment coordinator for the Pirou Brynderwyn Landscape Trust (P.L.C.) said, "I want to find out how to get a base line data. These education days are a great way for communities to assess this information and create an ongoing testing system for the future."

The Northern Regional Council has provided funding for this action based environmental education programme. It is available for schools and communities who are interested in the health of the local waterways. Assessing a stream or river's health can help identify damage from water pollution and other human activities upstream. Early detection of problems in rivers is the key to quick repair, before larger damage might occur.



Carey Habious conducting a water assessment test

2 UPPER HUTT LEADER, OCTOBER 5, 2022

### YOUR LOCAL NEWS

neighbourly.co.nz/upperhutt

## Planting inspires students

FROM Page 1.

The students have been learning about the freshwater environment as part of the Whitebait Connection programme delivered by Mountains to Sea Wellington, culminating in them improving the health of the stream.

These plants will improve the bare patches of stream bank in Heretaunga Park, reducing bank erosion, nutrient run-off and encouraging the return of native animals like the pukeko.

"It has been a privilege to work with these students across the term," said Sarah Kachwalla, of Mountains to Sea Wellington.

It is clear through the passion and effort shown by students during the planting day how much their knowledge and connection to this special place has grown.

Environment: Michelle Ducat was one of the driving forces behind the action, helping co-ordinate and setting the groundwork for the undertaking.

She knew the schools were keen to connect with this place and honour the restoration work that has already been done.

It has been amazing to see the community come together for this planting to support students.

The plants were sourced from nurseries at Forest and Bird Upper Hutt and Rimutaka Prison. Funding for the trees came from the One Billion Trees programme. Part of



Breah Williams from Trentham School took part in a tree planting last week.

what makes this project so exciting is its longevity, Sarah said.

Both Trentham and Trentham schools are feeder schools for Fergusson Intermediate

and the hope is that tamariki will carry this kaupapa with them as they get older, staying connected with this space and creating a sense of agency and stewardship.

As part of the ongoing mahi, the students also learned how to look after the plants' future by doing things like mulching, weed releasing and watering.

## National Funders and supporters

- Ministry for the Environment
- The Tindall Foundation
- Department of Conservation
- Wilderlab
- NZARM
- NZ Landcare Trust
- National Advisory Group for Freshwater Citizen Science
- NIWA
- The Chocolate Fish Co
- 2 Plus
- NZ Native Fauna

## Regional funders and Supporters

### Northland

Foundation North, Northland Regional Council, Whangarei District Council, DOC Northland, MTF Finance, Ministry for the Environment, Fonterra

### Auckland

Auckland Council Healthy Waters, Auckland Council Community Grants, Auckland Council Local Boards, Foundation North, WWF-New Zealand, Te Hononga Akoranga COMET, MPHS Community Trust, DOC Auckland

### Tairāwhiti Gisborne

Ministry of Education

### Wellington

Greater Wellington Regional Council, Porirua City Council, NIWA, Ministry of Education, KAPag and WaiP2K

### Nelson/Tasman

Tasman District Council, Rātā Foundation and Sport Tasman





## Partners and Collaborators

### Northland

Kaipara Moana Remediation, Enviroschools, Patu Harakeke, Whirinaki Trust, Tiakina Whangarei, Ngāti Manu, EcoSolutions, Whangarei District Council, Ko Waitangi Te Awa Trust, NorthTec, NZ Landcare Trust, Tiaki Nga Wai O Hokianga, Waipu Waters, Fonterra, Te Uri O Hau Environs, DOC Northland, Reconnecting Northland, Kaitiaki Whangaroa, Enviroschools, Te Aho Tū Roa

### Auckland

Auckland Council (Healthy Waters, Sustainable Schools Auckland, Wai Care, Biodiversity, Biosecurity, RIMU, Parks and Community Rangers), Beautification Trust, Comet NZ, Forest & Bird, Kaipara Moana Remediation, Kaipātiki Project, Uru Whakaaro, CUE Haven, EcoMatters, Community Waitakere, Whangateau Harbour Care, Aotearoa Lakes, Springboard Trust, Mahurangi East Land Restoration Project, MPHS, Ministry for Primary Industries, Auckland Zoo, Recreation Solutions, Trees for Survival, Conservation Volunteers, Urban Ark, Te Pua Nga Maara - Rangatahi Innovators, Auckland Botanic Gardens, Matuku Link, Friends of the Whau, Te Hononga a Iwi - Rosedale Restoration, Puhoi Landcare, Pakiri Landcare Trust, Restore Takarunga Hauraki, Otanerua Eco Neighbours, Uru Whakaaro, Bushglen Reserve Restoration Project.

### Wellington

Friends of Mawai Hakona, Wairarapa Pukaha to Kawakawa and their associated FW community groups, Pukaha Wildlife Centre, Enviroschools, Fish and Game, Masterton District Council, Wilderlab, Ahurea Taiao, Kahungunu ki Wairarapa, Greater Wellington, Rangitane o Wairarapa, Wellington City Council, Porirua City Council, KETE, Taranaki Whānui, Zealandia, Conservation Volunteers NZ, Ngahere Korowai, Te Herenga Waka, DOC, Otaraua Te Atiawa Ki Whakarongotai JFN, Ngā Hapū o Ōtaki, Field based STEM providers, Ngā Manu, Groundtruth, KAP Ag, ART Rongoā Confederation, NIWA, National Advisory Group for Freshwater Citizen Science, MPI, NZ Landcare Trust, Ministry for the Environment, The Mokomoko Project, NZQA, Ocular, RNZ

### Nelson/Tasman

Tasman District Council, Enviroschools, NZ LandCare Trust, Nelson City Council, Brook Waimarama Sanctuary, Whakatu Corporation, Cawthron Institute, (NMIT) Nelson Marlborough Institute of Technology, Port Nelson, Kaiteriteri Recreational Reserve, Abel Tasman Seashuttle, DOC, Fish and Game, Motueka Catchment Collective, Tasman Environmental Trust (TET), NZAEE, Motueka Technology Centre, Nelson Biodiversity Forum, STEMS, Abel Tasman Eco Tours, Whenua iti Outdoor Pursuit Centre, Upper Moutere Catchment Collective, Ngāti Apa, Ngāti Tama Ki Mohua, Ngāti Tama, Ngāti Rārua, Cawthron, Enviro Hub Marlborough, MPI Farm Support, Pub Charity, Lions, 141, Edens Lodge, Abel Tasman Kayaks, Conservation Kids NZ, Abel Tasman Waka Tours, Nelmac, Pacific Discovery Tours, Nature Conservancy, Image Creators, Ethically Mad, Smart Business Centre Motueka and the Gift Trust.



## Keep up to Date with our Mahi



Like us on Facebook [here](#) to hear about our impact as it happens



Follow us on Instagram [here](#)



Check out our website [here](#) to find a coordinator in your region and to access our resources



Follow us on youtube [here](#)

